



# Hill View Primary Academy

## Reach For The Stars

Newsletter No. 25 w/c 13/03/26

### Year 4 Update

Year 4 had a fantastic time on their trip to Paultons Park last week, where their learning about circuits, mechanisms, and forces was truly brought to life. The workshop they attended was a real highlight, giving the children hands-on opportunities to experiment with electrical circuits and explore how electricity and different mechanisms help theme park rides function safely and smoothly.



After the workshop, the children were able to explore the park and enjoy the rides with their friends, creating core memories together.



Back at school, they have since applied their new knowledge and inspiration to design and build their own moving posters using circuits and mechanisms. What a brilliant and enriching trip!

Miss Vahidi & The Year 4 Team

### Coming Up w/c 23<sup>rd</sup> March

**Whole School** [Big Walk and Wheel Challenge](#)

**Tuesday 24<sup>th</sup>** – **Year 5** Southampton Art Gallery Trip

**Thursday 26<sup>th</sup>** – **Year 5** Parent Outcome 3.30pm (Enter via Y3 side gate)

**Friday 27<sup>th</sup>** – **Whole School** INSET Day (School closed to all pupils)

### Reminders

**Year 2** [Marwell Zoo Trip](#) £19 payment due 3<sup>rd</sup> April

**Year 4** – [Residential Trip](#) instalment payments due

**Year 6** – [Residential Trip](#) instalment payments

### Pupil Absence

If your child is going to be absent from school, please inform the school office:

Tel: 01202 514109

E-mail: [reception@hillviewacademy.org](mailto:reception@hillviewacademy.org)

#### Office open hours:

**8.30am – 4pm. Mon – Fri. Term-time only**

If leaving a message or sending an e-mail, please give the child's name & class. We are required to record the **reason for any absence**. [Please let us know your child's specific symptoms](#) e.g. temperature, cold/flu symptoms, vomiting etc.

The [NHS website](#) has advice regarding keeping your child away from school if they are unwell.

### Contact Us

**Office:** [reception@hillviewacademy.org](mailto:reception@hillviewacademy.org)

**SENCo/ Miss Ellis:** [senco@hillviewacademy.org](mailto:senco@hillviewacademy.org)

**Morning club:** [morningclub@hillviewacademy.org](mailto:morningclub@hillviewacademy.org)

**After School Club:** [afterschoolclub@hillviewacademy.org](mailto:afterschoolclub@hillviewacademy.org)

**Website:** [www.hillviewacademy.org](http://www.hillviewacademy.org)

### Hot School Meals ([Forerunner](#))

Deadline: midnight on Mondays for the following week.

## PTFA Update



## Uniform Preloved & NEW!

We have a wide range of stock available of new Uniform to purchase from us. Please see our updated price list below or by [clicking here](#) to view on the school website.

We would like to thank our very kind sponsors for supporting this event: Meyers Estate Agency and Websters Butchers

## PTFA Team Spotlight:

### Rob (Co-Chair



Hi, I'm Rob, I joined the team 2 years ago and co-Chair with Rachel. My role involves organising events, coordinating the raffles and linking with the school about fund raising projects.



I'm Daddy to my twin boys in Year 2 who love all our fun events and are always super excited to see me around school.

I work full time as a clinical lead nurse so the time I can give is really variable but also flexible. I'm super proud to be part of a fun, friendly and proactive team and all that we achieve for our children and the wider school community.

If you're interested in helping at the events or joining the team, please get in touch, we would love to have you aboard!

## Lost property school uniform

At the end of the term, the unnamed school uniform will be adopted by the PTFA and sorted to be part of our preloved sale. Please, if you think you may have lost any unnamed uniform, check the boxes in the foyer at the main office as it may be there! Our lovely team have sorted and attempted to return any named items to their appropriate class!

Item	Price
Sweatshirt	£13.00
PE T-Shirt	£8.00
Cardigan	£15.00
Ties	£5.00
Book Bag	£10.00
Polar Fleece	£17.00

Item	Size	Price
Cardigan	22" (3-4yrs), 24" (4-5yrs), 26" (5-6yrs), 28" (7-8yrs), 30" (9-10yrs), 32" (11-12yrs), 34" (13yrs), 36" (5 Adult)	
	Fleece	3-4yrs, 5-6yrs, 7-8yrs, 9-10yrs, 11-12yrs, 13yrs
	Sweatshirt	24" (4-5yrs), 26" (5-6yrs), 28" (7-8yrs), 30" (9-10yrs), 32" (11-12yrs), 34" (13yrs), 36" (5 Adult)
PE T-Shirt	3-4yrs, 5-6yrs, 7-8yrs, 9-10yrs, 11-13yrs, S, M & L	

To place orders, please contact us by Email: [hillview.ptfa@hotmail.co.uk](mailto:hillview.ptfa@hotmail.co.uk) or our Facebook page: Hill View Primary School P.T.F.A. Cash and Card payment accepted

We continue to have stock in the main office for pre-loved items. An honesty box is at the reception desk. We only accept cash for pre-loved.

Items	Price (Cash)
Book Bags	
PE T-Shirts	
Pinafores	
Shorts (all inc PE)	£1 EACH
Skirts	
Shoes (& Plimsols)	
Summer Dresses	
Ties	
Trousers	
Cardigans / Sweatshirts	£4 EACH
Coats / Fleece	
White Shirts	2 for 50p

Cash Payment: There is an honesty box in the school office  
Donations: We are always pleased to receive uniform donations. These can be left under the clothes rail  
Thank you for your support

If you have any clean, good quality items for donating, please leave in a bag under the existing clothes rail. All donations are gratefully received. **Thank you.**

## Classlist

If you haven't already done so, please [sign up to Class List](#). This app helps keep track of events and enables you to book tickets and pay for PTFA events.

## How to reach us:

Email: [Hillview.ptfa@hotmail.co.uk](mailto:Hillview.ptfa@hotmail.co.uk)

Facebook: [www.facebook.com/hillview.primaryptfa/](http://www.facebook.com/hillview.primaryptfa/)

Classlist: <https://classlist.page.link/6d9FBeD11FcyAUrCZ>

# Red Nose Day

Today the whole school took part in Comic Relief by wearing RED (or dressing as a shark) and donating money to this worthy cause.

Throughout the day all children had the opportunity to design a red nose for a competition run by the School Council. If your child chose to take their design sheet home with them today, there is still time for them to complete it over the weekend and hand it on to their teacher on Monday. The School Council will judge the red noses and announce the winners next week.

We are proud to share the following piece of work by Sye in Year 2. Well done Sye!



# Spring Term Dates for your diary

## Year R

[Height & Weight Checks](#) Wed 15<sup>th</sup> April

## Year 2

[Marwell Zoo Trip](#): Friday 24<sup>th</sup> April

## Year 4

[Hooke Court Information Meeting](#): Wed 20<sup>th</sup> May from 3:40-4:10

## Year 5

[Winchester Science Centre Trip](#): Tuesday 19<sup>th</sup> May

# Links to Letters & Home Learning

All copies of letters and home learning can be found on our [school website](#) under Parents – Letters.

Please click the links below to take you directly to these online pages:

- [Whole School Letters](#)    [EYFS Letters](#)
- [Year 1 Letters](#)            [Year 2 Letters](#)
- [Year 3 Letters](#)            [Year 4 Letters](#)
- [Year 5 Letters](#)            [Year 6 Letters](#)




**INSET Day:**  
Friday 27<sup>th</sup> March

**Easter Holidays:**  
Monday 30<sup>th</sup> March – Friday 10<sup>th</sup> April


[Full School Term Dates for current and future academic years](#)

Let's do this 103/26

## Red nose day



- 1 Red nose day is a day that everyone
- 2 has red clothes or atleast something red.
- 3 Every red nose day people act funny
- 4 and bring in coins to donate for the poor.
- 5 Red nose day is a day that everyone
- 6 celebrates, has fun, and wears red cloths.
- 7 On red nose day alot of people are happy
- 8 but may celebrate in lots of different ways.
- 9 Red nose day brings joy and happiness to
- 10 the earth and you make even know yourself.
- 11 Some people in different places may celebrate
- 12 differently, you never know what they would
- 13 do though.



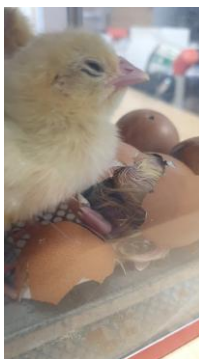
class: Park b454e6

## Living Eggs



On Monday, as part of our annual Living Eggs programme, we received a delivery of 10 ready to hatch eggs. This unique two-week hatching programme provides 10 embryo eggs, a custom designed incubator, brooder box, feed and bedding.

All 10 eggs hatched on Wednesday, and we now have 4 girls and 6 boy chicks. They have already grown so much, and the children and adults have loved watching them fall asleep standing up, and climbing over each other.



The chicks will be leaving school on Friday 27<sup>th</sup> March to settle into their new chicken friendly farm homes.

## Summer Term school lunches



The [Summer Term lunch menu](#) is now live on the Forerunner website. The deadline to place orders ready for our return to school after the Easter break will be midnight on **Monday 6<sup>th</sup> April.**

[Please click here to log in to forerunner](#)

We do not have spare/ extra meals delivered to school. If you miss the deadline you will need to provide a packed lunch for your child/ children.

Thank you for your understanding and cooperation.

Public

## Behaviours that Challenge Us Information Sessions

"I implemented one of the strategies the next day with great results!"

We are pleased to be able to offer Free one-off sessions for parents living in Dorset to understand more about 'Child Behaviours that Challenge us'

For parents with children between the ages of 5 and 11

The session is delivered by a Child Clinical Psychologist and an Action for Children Parenting Practitioner

**Wednesday 4<sup>th</sup> March**  
 10:00am – 12:00pm  
 Virtual session via Microsoft Teams

**Wednesday 15<sup>th</sup> April**  
 10:00am – 12:00pm  
 Virtual session via Microsoft Teams

"I found it really useful to know about why the behaviour occurs, even if you can't always change it, having the understanding makes it easier for me to cope with"

These are one-off sessions so you only need to attend one event

Places are limited and can be booked via our website using the QR code or by visiting: [www.actionforchildren.org.uk/dorset](http://www.actionforchildren.org.uk/dorset)

Action for Children, whose registered address is at 3 The Boulevard, Acce Road, Watford WD18 8AG and registered as a charitable company limited by guarantee in England & Wales under number 4764232. Registered charity numbers 1207940/SC235091.

## FREE online talk by Jane Keyworth

FACE family Advice Lead Facilitator

# Decreasing Depression

23rd April 7-8pm

Book online

[www.facefamilyadvice.co.uk](http://www.facefamilyadvice.co.uk)

Parents - Live Talks page

## Online FREE talk by Jane Keyworth

# Anxiety Based School Avoidance

March 26th 7-8pm

Book online

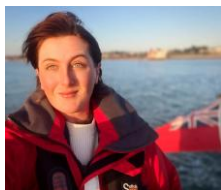
[www.facefamilyadvice.co.uk](http://www.facefamilyadvice.co.uk)

go to PARENTS - Live Talks page

All 16 parent talks **FREE** with our School Membership

## Ella in the Arctic

Some of our KS2 children had the opportunity to meet and speak to Ella Hibbert, the first British woman to sail the Northwest passage single-handed.



This summer, Ella will be attempting to become the first person ever to circumnavigate the Arctic Circle alone, to raise awareness of climate change's impact on the Arctic and fundraise for two amazing charities. [Polar Bears International](#) and [Ocean Conservancy](#).

Navigating such a perilous environment alone comes with unique challenges – not least being unable to sleep for more than 20 minutes at a time for much of the trip to avoid drifting and crashing!

If successful, it will be a bittersweet moment for Ella, who says “on the one hand, I will have achieved a record, but on the other hand, it is a journey that should not be possible, and it will prove that the Arctic, which is currently warming 2 to 3 times faster than the rest of the world, no longer has the ice covering that it once did”.

Ella will set sail towards the end of May from Portsmouth, and hope to be back in time for her birthday in October! Upon her return, she will be auctioning Yeva (her yacht) with the proceeds going to charities which fight to protect the Arctic north.



You can read and learn more about Ella and her adventures on her website [Homepage - Ella in the Arctic](#)



## Recommended Read Book of the week (Y4)

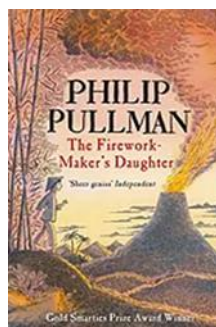
### The Firework Maker's Daughter By Philip Pullman

What Lila wants to be more than anything else in the world is . . . a Firework-Maker!

But firework-making is not just about being able to make Crackle-Dragons and Golden Sneezes.

There is also one special secret: every Firework-Maker must make a perilous journey to face the terrifying Fire-Fiend!

Not knowing that she needs special protection to survive the Fire-Fiend's flames, Lila sets off alone. Her friends, Chulak and Hamlet - the King's white elephant - race after her. But can they possibly reach her in time?



## This week's Wizards



- YR – Charlie W
- Y1 – Flo S
- Y1 – Luana F
- Y2 – Henry F
- Y2 – Arabella A
- Y2 – Harry T
- Y2 – Harry O
- Y3 – Nova-May M
- Y3 – Vihaan D
- Y4 – Riley B
- Y4 – Hannah SH
- Y4 – Lily A
- Y5 – Olivia P
- Y5 – Chloe T
- Y6 – Cristian R
- Y6 – Milo B
- Y6 – Harrison E



## Maths Badges



### ADDER Badges:

- Y4 – Pippa L
- Y4 – Phoebe W

### SMILE Badges:

- Y4 – Bradley S
- Y4 – Charlie E
- Y4 – Igor S
- Y4 – Maisie H
- Y4 – Beau S
- Y5 – Caden C
- Y6 – Jack D



## Attendance Cup Winners

### W/C 16<sup>th</sup> March

YR - ROSEN 95.8%

KS1 – NIGHTINGALE 97.3%

Lower KS2 – MURRAY 96.7%

Upper KS2 – CASSIDY 96.3%



BBC

# Is your child finding it hard to make friends?

The award-winning makers of *The Dog House* are casting for a brand-new BBC series about friendship.

We are looking for children aged 5 to 8 from all over the UK who need a little help navigating the world of friendship. Over three days, a team of child psychologists will help them build the social skills and confidence to make real, lasting connections with other kids.

If you'd like to help your child make a new friend (with no pressure to take part), please apply at:

[bemyfriend.tv](http://bemyfriend.tv)



FIVE MILE FILMS

Saturday 28th March

# POOLE PARK OPEN DAY

All hire is FREE  
Open 10am-4pm

# BOSCOMBE ALBION YOUTH

## Football Trials

Develop your skills  
Age groups 6 and upwards  
Boys and Girls teams



## TRIALS

May 2/9/16/23  
Kings Park (Clarence Park Road end)  
10am start

Contact Jimmy on  
07765991983

[www.boscombealbion.com](http://www.boscombealbion.com)

Boscombe Albion Youth

**ADVERTS** – Hill View Primary places all adverts in good faith. It should be noted however that the quality of products or services being offered have not been checked by the school nor are the school aware whether necessary DBS checks have been carried out. Hill View Primary is neither encouraging nor discouraging any advert placed.



HIGHCLIFFE CASTLE



# Easter

## OUTDOOR TRAIL

Friday 3 - Monday 6 April 10am-3pm  
• Participating children £3.50  
• Adults Free

## EASTER ADMISSION

Friday 3 - Monday 6 April 10am-3pm  
• Adult standard admission  
• Children Free

## INDOOR CRAFTS

Woodland animal themed crafts available 10am-3pm on:  
• Tuesday 31 March, 7 April  
• Thursday 2, 9 April

Included in Castle admission, free for members

## Become a Highcliffe Castle Member

- Entry to the Castle for a year\*
- 10% discount in the Castle Shop
- 10% discount in the Castle Pantry
- School Holiday activities
- Discount on selected events
- Castle e-newsletter updates

Family Membership

£50

Up to two adults & three under 15s

For more information, please visit: [highcliffecastle.co.uk](http://highcliffecastle.co.uk)

HSU HEALTH SCIENCES UNIVERSITY

# STAMMERING CLINIC

Delivering evidence based therapy, developed by the Michael Palin Centre, for school aged children / young people who stammer. Free of charge for 2026.

8-14 year olds



10 week therapy programme delivered by speech therapists (and students) available May to August 2026 at HSU Bournemouth or online.



Please click the link below or scan the QR code to request further information by 1<sup>st</sup> May 2026  
<https://forms.office.com/e/a2qV7jaiVm>  
or email: [Elouise.Ashwin@hsu.ac.uk](mailto:Elouise.Ashwin@hsu.ac.uk)

