



Hill View Primary Academy

Reach For The Stars

Newsletter No. 24 w/c 09/03/26

World Book Week 2026

Last week we celebrated World Book Day with a packed programme of imaginative, book inspired activities designed to encourage a lifelong love of reading. The celebrations highlighted the importance of reading and supported national campaigns to encourage daily reading among young people.

The week began with Breakfast and a Book, where children enjoyed stories in class alongside a snack and a cuddly toy. Tuesday featured a Design a Potato Book Character competition. Who knew we were so creative with a potato! 😊



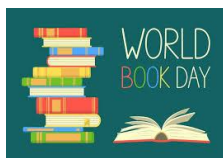
On Wednesday pupils attended a Pre-Loved Book Fair with every child guaranteed to take a book home. Thursday was the national dress up day where prizes were handed out, and Friday saw pupils create their own mini books in school. The better weather last week also allowed us to end each day with a whole school Everyone Reading in Class (ERIC) session on the main playground.



We want every child at Hill View to see themselves as a reader. World Book Day gives us a wonderful opportunity to celebrate stories, imagination and creativity, but our message is simple and lasting - reading for just ten minutes a day can make a real difference. It builds confidence, fuels curiosity and opens doors to opportunity.

We are incredibly proud of the enthusiasm our pupils have shown throughout the week and the support from our families in helping us make reading a daily habit.

Thank you for your support.



Coming Up w/c 16th March

Whole School [Big Walk and Wheel Challenge](#)

Thursday 19th – **Year R** Non-uniform (Fairytale ball)

Thursday 19th – **Year 5** VR Bikeability experience

Friday 20th – **Whole School** Non-uniform (Wear red for Red nose day - £1 donation)

Friday 20th – **Understanding Autism Workshop** for parents (9am via main office)

Reminders

Year 2 [Marwell Zoo Trip](#) £19 payment due 3rd April

Year 4 – [Residential Trip](#) instalment payments due

Year 6 – [Residential Trip](#) instalment payments

Pupil Absence

If your child is going to be absent from school, please inform the school office:

Tel: 01202 514109

E-mail: reception@hillviewacademy.org

Office open hours:

8.30am – 4pm. Mon – Fri. Term-time only

If leaving a message or sending an e-mail, please give the child's name & class. We are required to record the **reason for any absence**. [Please let us know your child's specific symptoms](#) e.g. temperature, cold/flu symptoms, vomiting etc.

The [NHS website](#) has advice regarding keeping your child away from school if they are unwell.

Contact Us

Office: reception@hillviewacademy.org

SENCo/ Miss Ellis: senco@hillviewacademy.org

Morning club: morningclub@hillviewacademy.org

After School Club: afterschoolclub@hillviewacademy.org

Website: www.hillviewacademy.org

Hot School Meals ([Forerunner](#))

Deadline: midnight on Mondays for the following week.

PTFA Update



Uniform Preloved & NEW!

We have a wide range of stock available of new Uniform to purchase from us. Please see our updated price list below or by [clicking here](#) to view on the school website.

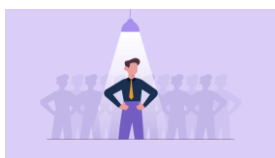
We would like to thank our very kind sponsors for supporting this event: Meyers Estate Agency and Websters Butchers

PTFA Meeting

Our next meeting for this term will be **Monday 16th March at 7:30pm at the Crown Pub**. You are welcome to attend and find out what else is going on!

PTFA Team Spotlight:

Sarah



I have a Grandson in year 1. Through my experiences as a parent and carer of children with additional needs, supporting families and creating an inclusive, understanding school community is very close to my heart. After being diagnosed with a brain tumour and managing significant caring responsibilities I felt I was losing myself. Being part of the PTFA has helped me rebuild my confidence and rediscover my sense of purpose and independence.



As one of the general members I am involved in organising the pre-loved uniform which I take great pride in as it helps support families and also raises funds for the school!

The PTFA are incredibly kind and supportive. I feel really grateful to be a part of such a welcoming community. If you're thinking about getting involved, not matter how much or how little time you have to give, please don't be shy, come and speak to one of us. Every little bit makes a difference for our children.

Item	Price
Sweatshirt	£13.00
PE T-Shirt	£8.00
Cardigan	£15.00
Ties	£5.00
Book Bag	£10.00
Polar Fleece	£17.00

Hill View Uniform Price List
Available to purchase from the P.T.F.A.

Cardigan Sizes: 22" (3-4yrs), 24" (4-5yrs), 26" (5-6yrs), 28" (7-8yrs), 30" (9-10yrs), 32" (11-12yrs), 34" (13yrs), 36" (5 Adult)

Fleece Sizes: 3-4yrs, 5-6yrs, 7-8yrs, 9-10yrs, 11-12yrs, 13yrs

Sweatshirt Sizes: 24" (4-5yrs), 26" (5-6yrs), 28" (7-8yrs), 30" (9-10yrs), 32" (11-12yrs), 34" (13yrs), 36" (5 Adult)

PE T-Shirt Sizes: 3-4yrs, 5-6yrs, 7-8yrs, 9-10yrs, 11-13yrs, S, M & L

To place orders, please contact us by Email: hillview.ptfa@hotmail.co.uk or our Facebook page: Hill View Primary School P.T.F.A. Cash and Card payment accepted

We continue to have stock in the main office for pre-loved items. An honesty box is at the reception desk. We only accept cash for pre-loved.

Items	Price (Cash)
Book Bags	
PE T-Shirts	
Pinafores	
Shorts (all inc PE)	£1 EACH
Skirts	
Shoes (& Plimsols)	
Summer Dresses	
Ties	
Trousers	
Cardigans / Sweatshirts	£4 EACH
Coats / Fleece	
White Shirts	2 for 50p

Cash Payment: There is an honesty box in the school office

Donations: We are always pleased to receive uniform donations. These can be left under the clothes rail

Thank you for your support

If you have any clean, good quality items for donating, please leave in a bag under the existing clothes rail. All donations are gratefully received. **Thank you.**

Classlist

If you haven't already done so, please [sign up to Class List](#). This app helps keep track of events and enables you to book tickets and pay for PTFA events.

How to reach us:

Email: Hillview.ptfa@hotmail.co.uk

Facebook: www.facebook.com/hillview.primaryptfa/

Classlist: <https://classlist.page.link/6d9FBeD11FcyAUrCZ>


PARENT CARERS TOGETHER



Bournemouth Christchurch Poole

the voice of parent carers of young people with special educational needs and disabilities


SEND Reforms

 Have Your Say on the SEND Reforms

Parent Carers Together, the parent carer forum for BCP, is gathering feedback from parent carers on the government's proposed SEND Reforms (<https://www.gov.uk/government/publications/every-child-achieving-and-thriving>)

We currently have 4 open Padlets:

 Universal Offer - <https://padlet.com/PCT4BCP/send-reforms-universal-offer-srs1fj8uqguils8h>

 Tier 1 Targeted Support - <https://padlet.com/PCT4BCP/send-reforms-tier-1-targeted-support-pofb5e9jstprbd26>

 Tier 2 Targeted Plus Support - <https://padlet.com/PCT4BCP/send-reforms-tier-2-targeted-plus-tsgc415fuhcnn07h>

 Tier 3 Specialist Support - <https://padlet.com/PCT4BCP/send-reforms-tier-3-specialist-support-34h29ciawhbq7863>

We know the proposal are complex, you don't need to understand everything - just tell us how these ideas would impact your family.

Your views will help us shape our response to the consultation and help shape services locally, ensuring that parent carer voices are heard.

All Padlets are anonymous and easy to use.

These are open till noon on 12th May 2026.

We will be launching additional Padlets between now and end of April focusing on other aspects of the proposals, so please keep an eye out.

You can find out more about the forum via our website- <https://www.parentcarerstogether.org.uk/> or our public Facebook page - <https://www.facebook.com/parentcarerstogether>

From

Parent Carers Together Steering Group

Spring Term Dates for your diary

Year R

Fairytale Ball (Non-uniform Day) Thursday 19th March

[Height & Weight Checks](#) Wed 15th April

Year 2

[Marwell Zoo Trip](#): Friday 24th April

Year 4

[Hooke Court Information Meeting](#): Wed 20th May from 3:40-4:10

Year 5

[Southampton Art Gallery Trip](#): Tuesday 24th March

Parent Outcome: Thursday 26th March

Links to Letters & Home Learning

All copies of letters and home learning can be found on our [school website](#) under Parents – Letters.

Please click the links below to take you directly to these online pages:

[Whole School Letters](#) [EYFS Letters](#)

[Year 1 Letters](#) [Year 2 Letters](#)

[Year 3 Letters](#) [Year 4 Letters](#)

[Year 5 Letters](#) [Year 6 Letters](#)



INSET Day:
Friday 27th March

Easter Holidays:
Monday 30th March – Friday 10th April

[Full School Term Dates for current and future academic years](#)

Dentist & Opticians Appointments

Please may we request that routine dental check-up appointments and opticians appointments are made outside of school hours wherever possible. Dental surgeries usually keep late afternoon and school holiday appointments for school age children to help avoid them missing out on education. Most opticians are also open all day on Saturdays and Sundays.

Thank you for your understanding and cooperation.

Living Eggs



On Monday, as part of our annual Living Eggs programme, we will receive a delivery of 10 ready to hatch eggs. This unique two-week hatching programme provides 10 embryo eggs, a custom designed incubator, brooder box, feed and bedding.

The eggs should start to hatch on Wednesday or Thursday. We can't wait to see how quickly they grow, and to see the transformation from yellow fluff to feathered wings!



Photos from last academic year

The chicks will be leaving school on Friday 27th March to settle into their new chicken friendly homes.

Current Year 2 Parents (Universal Free School Meals)

We would like to remind you that children's eligibility for the Universal Free School Meals comes to an end at the end of Key Stage 1 (Year 2).

If you would like your child to have hot school meals from Year 3 onwards, these will no longer be free unless you are eligible for Free School Meals (FSM). You can of course still order hot lunches as usual through Forerunner, but they will be charged per meal.

If you think you're eligible and would like to apply for FSM, or if you'd like to check the criteria, please visit the BCP Council website (link below) for more information.

[Free school meals | BCP](#)

Public

Behaviours that Challenge Us Information Sessions



"I implemented one of the strategies the next day with great results!"

We are pleased to be able to offer Free one-off sessions for parents living in Dorset to understand more about 'Child Behaviours that Challenge us'

For parents with children between the ages of 5 and 11

The session is delivered by a Child Clinical Psychologist and an Action for Children Parenting Practitioner

Wednesday 4th March

10:00am – 12:00pm

Virtual session via Microsoft Teams

"I found it really useful to know about why the behaviour occurs, even if you can't always change it, having the understanding makes it easier for me to cope with"

Wednesday 15th April

10:00am – 12:00pm

Virtual session via Microsoft Teams



These are one-off sessions so you only need to attend one event

Places are limited and can be booked via our website using the QR code or by visiting: www.actionforchildren.org.uk/dorset

Action for Children, whose registered address is at 3 The Boulevard, Ascot Road, Watford WD18 8AG and registered as a charitable company limited by guarantee in England & Wales under number 4764232. Registered charity numbers: 1207940/SC235891.



Dorset Mental Health Support Team in Schools



Dorset HealthCare University NHS Foundation Trust

UNDERSTANDING AUTISM: PRACTICAL SUPPORT FOR PARENTS & CARERS

School: Hill View Primary
Date: Friday 20th March
Time: 9am

No diagnosis needed – everyone's welcome

Join us for a friendly workshop with practical ideas to support autistic children and young people.

We'll cover:

- Sensory needs and overwhelm
- Communication differences
- Behaviour and emotional regulation
- Anxiety and wellbeing
- Useful techniques you can try at home



FREE RESOURCES



@DORSETMHST



Online FREE talk by Jane Keyworth

Anxiety Based School Avoidance

March 26th 7-8pm



Book online

www.facefamilyadvice.co.uk
go to PARENTS - Live Talks page



All 16 parent talks FREE with our School Membership

Red Nose Day

We're excited to be celebrating Red Nose Day on Friday 20th March! Children are invited to come to school wearing something red and bring a £1 donation to support this fantastic cause.



FRIDAY 20 MARCH

As part of the fundraising fun, pupils will also be designing their very own red nose in school for a special competition. Over the weekend, please encourage your children to start thinking about what creative design they might like to create.

Thank you for your support—we're looking forward to a colourful and imaginative day!

Parking

Please may we remind everyone that the allocated disabled parking bays outside school should not be used unless you have a valid blue badge.

We have also received several complaints from residents this week that parents are parking over their driveways.

Where You CAN'T Park or wait (Even with a Blue Badge)

While a Blue Badge gives you more flexibility, there are still a few no-go areas:

- Obstructing dropped kerbs (e.g. residents driveways)
- Loading bays (unless signs say otherwise)
- Bus stops and taxi ranks
- Pedestrian crossings (think zigzag lines)
- No stopping zones (e.g. the single yellow lines on Hill View Road opposite the school during school drop off and pick up times)

Illegally parked vehicles can be reported to parking@bcpcouncil.gov.uk





Recommended Read Book of the week (Y2)

The Day The Crayons Quit By Drew Daywalt

Poor Duncan just wants to colour in. But when he opens his box of crayons, he only finds letters, all saying the same thing: We quit. Beige is tired of playing second fiddle to Brown, Blue needs a break from colouring in all that water, while Pink just wants to be used. Green has no complaints, but Orange and Yellow are no longer speaking to each other. The battle lines have been drawn. What is Duncan to do?



Last week's Wizards



YR – Jennifer N
YR – Harley A-P
Y1 – Emily E
Y1 – Eleanor C
Y1 – Demi C
Y2 – Hattie M
Y2 – Sahab A
Y3 – Bonnie R
Y3 – Holy T
Y3 – Tommy C
Y4 – Phoebe W
Y4 – Sabila S
Y4 – Austin G
Y5 – Charlotte C
Y5 – Kimberley S
Y5 – Elsie S
Y6 – Hope R
Y6 – Jack D



This week's WIZARDS

YR – Carter H
YR – Louis G
Y1 – Teo JV
Y1 – Jakub B-J
Y2 – Bianca FC
Y2 – Everly S
Y3 – Carter H
Y3 – Ellie-Mae W-W
Y3 – Zelda P
Y4 – Bradley S
Y4 – Joshua M
Y4 – Archie P
Y5 – Macy B
Y5 – Max P
Y5 – Fionnulu S
Y6 – Ellie M
Y6 – Freya P

Attendance Cup Winners

W/C 9th March

YR - DONALDSON 95.4%

KS1 – MONET 99.2%

Lower KS2 – HAWKING 98%

Upper KS2 – CASSIDY 96.3%



ADVERTS – Hill View Primary places all adverts in good faith. It should be noted however that the quality of products or services being offered have not been checked by the school nor are the school aware whether necessary DBS checks have been carried out. Hill View Primary is neither encouraging nor discouraging any advert placed.

Award-winning Sports Coaching and Ofsted Registered Childcare Provider

Foundation Sports & Play

Easter Holidays Sports & Play Camps!

Tax-free childcare, childcare vouchers and childcare grants accepted

Our Team

Enhanced DBS Checked, Staff on the Update Service, Qualified in Sports & Childcare, SEND Trained, First Aid Trained & Safeguarding Children Trained. We are always putting the children's welfare first!

Activities

Our engaging programs have 3 areas of play: Sport (football, gymnastics) Play (board games, lego, outdoor exploration) and Craft (art, masks & biscuit decorating). We have activities for every child's interests.

Venues

Stourfield Junior School, BH6 5JG
BCS Preparatory School, BH14 9JY
The Epiphany School, BH9 3PE
Castle Court School, BH27 3RF
New! Christchurch Infant School, BH23 2AE

Time

9.00am - 3.00pm with early drop off available from 8.00am & late pick-up times for 4.30pm & 5.30pm.

Dates

Mon 23rd March - Fri 10th April.
Dates vary by location. Please check your specific venue for exact dates.

Ages

3 - 12 years old. 3 year olds only able to book on at BCS & Castle Court.



From £27.50 Per Day

Ofsted Registered Provider

Tax-free Childcare & Vouchers

HAF Funded Spaces Accepted

Bookings & Contact

Click: www.foundation-play.com
or scan the QR code to the right.
E: dorset@foundation-sports.com
IG: @fsportsandplay | FB: Foundation Sports & Play Dorset
Phone: 01202 00785



Little Chicks Day Nursery & Pre School

Easter Raffle

Join us for a fun-filled raffle event supporting a great cause.

TICKETS
£1 EACH
CASH ONLY PLEASE

Lots of amazing prizes up for grabs!
Tickets to be drawn **17th April**

Tickets available for purchase from Little Chicks and *Twins Temptations* (83 Coombe Ave, BH10 5AB)

Buy a ticket, support the community, and stand a chance to win exciting prizes! All proceeds will go towards the Ellis Edwards Foundation



1 Lybourne Ave, BH10 6ES | 01202 082410



HOP ABOARD FOR EASTER WITH PETER RABBIT™ 3RD - 6TH APRIL 2026

PETER RABBIT™ RETURNS THIS EASTER.
EGG HUNT, MEET PETER* AND ENJOY A GREAT DAY OUT.
*AT INTERVALS THROUGHOUT THE DAY

BOOK AT:
SWANAGERAILWAY.CO.UK



MOORDOWN & SOUTHBOURNE YOUTH FOOTBALL CLUB

RECRUITMENT DAY!

25TH APRIL 2026 9.30AM - 12.30PM
@ ST. PETERS PRIMARY SCHOOL B'MOUTH BH7 6RG

Moordown & Southbourne Football Club are currently looking for players to join their exciting teams ready for the 2026/27 season.

If your child is currently aged 6 to 11 years old and they are looking to join a fantastic and friendly football club, then scan the QR code below to register your interest in joining our fun filled recruitment day packed with exciting football based games, activities and maybe even an ice cream van – just get there before the coaches do!



www.facebook.com/MoordownAndSouthbourne
www.instagram.com/moordownsouthbournefc

