



# Hill View Primary School

## Reach For The Stars

Newsletter No. 21 w/c 09/02/26

### Year 4 update

What an exciting and hardworking term it has been for Year 4! The children have shown fantastic enthusiasm, curiosity and creativity throughout their learning.

This term, the children became historians and artists as they explored the fascinating world of the Romans. They learned about Roman life, fun facts, and the lasting impact Romans have on our world today. In art, they designed and created their own Roman mosaic tiles, carefully arranging patterns and colours with great creativity.



We also enjoyed a visit from two dentists, who delivered an engaging workshop about teeth, their functions, and the importance of good dental hygiene. The children asked excellent questions and learned how to keep their teeth healthy.

To finish our Romans topic, Year 4 took part in a brilliant *Play in a Day*. Working together, they rehearsed and performed a fantastic Roman-themed play, showcasing teamwork, energy and impressive acting skills.

We are incredibly proud of all they have achieved this term and can't wait to see what they do next!

**Miss Vahidi & the Year 4 team**



### Coming Up w/c 23<sup>rd</sup> February

**Monday 23<sup>rd</sup> – YR [Vision Screening](#)**

**Wednesday 25<sup>th</sup> – [Whole school Author visit](#) & [book signing event](#) 3.30pm – 4.30pm**

**Friday 27<sup>th</sup> – [Attenborough](#) class Swimming**

### Reminders

**All years – [Author Andy Seed visit](#). £1.25 payment**

**Year 2 [Marwell Zoo Trip](#) £19 payment due 3<sup>rd</sup> April**

**Year 4 – [Residential Trip](#) instalment payments due**

**Year 5 – [Southampton Art Gallery Trip](#) £14 payment due Monday 3<sup>rd</sup> March**

**Year 6 – [Residential Trip](#) instalment payments**



### Pupil Absence

If your child is going to be absent from school, please inform the school office:

**Tel:** 01202 514109

**E-mail:** [reception@hillviewacademy.org](mailto:reception@hillviewacademy.org)

#### **Office open hours:**

**8.30am – 4pm. Mon – Fri. Term-time only**

If leaving a message or sending an e-mail, please give the child's name & class. We are required to record the **reason for any absence**. [Please let us know your child's specific symptoms](#) e.g. temperature, cold/flu symptoms, vomiting etc.

The [NHS website](#) has advice regarding keeping your child away from school if they are unwell.



### Hot School Meals ([Forerunner](#))

Deadline: midnight on Mondays for the following week.

# PTFA Update



## SPRINGO (Bingo)

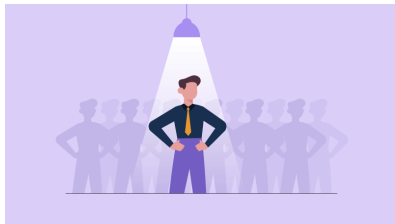


Are you a whizz with your stamper? Would you like a night shouting HOUSE! While enjoying a bar and food with your friends and family? Then please save the date for our spring Bingo session: **Friday 15<sup>th</sup> May 7-10pm**

We have the great delight to introduce the PTFA's very own Bingo Caller Matt, who has come out of retirement to introduce this special event.

If you or your company would like to sponsor any prizes for the evening for this unique marketing opportunity, please get in touch via classlist or email. All donations will be gratefully received!

## PTFA Team Spotlight



Hi, I'm **Rachel**, I've been part of the PTFA committee for 9 years now. Initially I was Treasurer for 5 years and then moved into my current Chair role for the past 4 years.



My son is in year 6 and I work full time running a business. Both my children have loved me being part of the PTFA since they've started school.

My main role is organising events with Rob, partnering with school regarding fundraising and all the administration that comes with running a committee. I don't have a great amount of time but somehow always make it work! The past 9 years have been so rewarding, the look on the children's faces is honestly, priceless. Any help really does make a difference!

## Hill View PTFA

## Uniform Preloved & NEW!

We have a wide range of stock available of new Uniform to purchase from us. Please see our updated price list below or by [clicking here](#) to view on the school website.

**Hill View Uniform Price List**  
Available to purchase from the P.T.F.A.

Sweatshirt	£13.00
PE T-Shirt	£8.00
Cardigan	£15.00
Ties	£5.00
Book Bag	£10.00
Polar Fleece	£17.00

**Cardigan** Sizes: 22" (3-4yrs), 24" (4-5yrs), 26" (5-6yrs), 28" (7-8yrs), 30" (9-10yrs), 32" (11-12yrs), 34" (13yrs), 36" (5 Adult)

**Fleece** Sizes: 3-4yrs, 5-6yrs, 7-8yrs, 9-10yrs, 11-12yrs, 13yrs

**Sweatshirt** Sizes: 24" (4-5yrs), 26" (5-6yrs), 28" (7-8yrs), 30" (9-10yrs), 32" (11-12yrs), 34" (13yrs), 36" (5 Adult)

**PE T-Shirt** Sizes: 3-4yrs, 5-6yrs, 7-8yrs, 9-10yrs, 11-13yrs, S, M & L

**To place orders**, please contact us by Email: [hillview.ptfa@hotmail.co.uk](mailto:hillview.ptfa@hotmail.co.uk) or our Facebook page: Hill View Primary School P.T.F.A. Cash and Card payment accepted

All profits made from sales go back into the school to benefit all pupils.

We can now send you a link for payment with easy collection from the school office

We continue to have stock in the main office for pre-loved items. An honesty box is at the reception desk. We only accept cash for pre-loved.

**'Pre-Loved' Uniform Price List 2024**  
Available to purchase from the rail in the school office

Items	Price (Cash)
Book Bags	£1 EACH
PE T-Shirts	
Pinafores	
Shorts (all inc PE)	
Skirts	
Shoes (& Plimsols)	
Summer Dresses	
Ties	
Trousers	
Cardigans / Sweatshirts	
Coats / Fleece	2 for 50p
White Shirts	

**Cash Payment:** There is an honesty box in the school office

**Donations:** We are always pleased to receive uniform donations. These can be left under the clothes rail

All profits made from sales go back into the school to benefit all pupils.

Thank you for your support

If you have any clean, good quality items for donating, please leave in a bag under the existing clothes rail. All donations are gratefully received. **Thank you.**

## Classlist

If you haven't already done so, please [sign up to Class List](#). This app helps keep track of events and enables you to book tickets and pay for PTFA events.

## How to reach us:

Email: [Hillview.ptfa@hotmail.co.uk](mailto:Hillview.ptfa@hotmail.co.uk)

Facebook: [www.facebook.com/hillview.primaryptfa/](http://www.facebook.com/hillview.primaryptfa/)

Classlist: <https://classlist.page.link/6d9FBeD11FcyAUrCZ>

# Road Safety & Parking



Sadly, we continue to receive several complaints from parents and residents regarding parking and road safety at drop off and pick up times. Dangerous parking is an increasing issue around schools, putting the safety of children and others at risk. Parking on zig-zag lines or pedestrian crossings can cause visibility issues to drivers and people walking the pavements alike. The new parking and no stopping restrictions outside our school have been implemented to help with easy flow of traffic and safety/ visibility when crossing the road.

## Drivers should not park or wait near a school entrance

This also includes anywhere that prevents access for emergency services, at or near a bus stop, opposite or within 10 metres of a junction, over a dropped kerb, and in front of an entrance to a property.

## Drivers should not park or wait on yellow zig-zag lines

These lines indicate the length of the road where stopping or waiting is strictly prohibited. Where there is an upright sign, there is a mandatory prohibition of stopping and/or waiting during the times shown.

## Drivers should not park or wait on white zig-zag lines

Unlike yellow zig-zag lines, white zig-zag lines are enforced by local authorities and the police, and prohibit stopping or waiting even in the presence of a sign.

## Drivers should not park or wait on double yellow lines

Stopping or waiting on a double yellow line is strictly prohibited. Double yellow lines prevent vehicle owners from parking or waiting in this area at any time.

## Drivers should not park or wait on single yellow lines at certain times

Single yellow lines prohibit parking during specific times. A nearby sign will indicate the times in which vehicle owners are allowed to park on single yellow lines.

## Blue Badge Holders

There are a number of dedicated blue badge spaces outside school.

## Where You CAN'T Park or wait (Even with a Blue Badge)

While a Blue Badge gives you more flexibility, there are still a few no-go areas:

- Loading bays (unless signs say otherwise)
- Bus stops and taxi ranks
- Pedestrian crossings (think zigzag lines)
- No stopping zones (e.g. the single yellow lines on Hill View Road opposite the school during school drop off and pick up times)

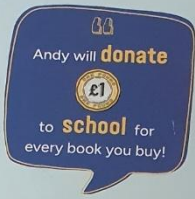


Illegally parked vehicles can be reported to [parking@bcpcouncil.gov.uk](mailto:parking@bcpcouncil.gov.uk)

Please help to keep us all safe by abiding to these rules. Thank you.

# Spring Term Dates for your diary

## Whole school



## Andy Seed Author Event

Coming to school Wednesday 25<sup>th</sup> February

- Author and humorist Andy Seed is visiting school to host an inspiring day of fun reading and writing workshops with all pupils.
- Pop-Up Bookshop is supporting Andy Seed with book sales to help generate school book fundraising!
- £1 from every book you buy benefits school with extra books!
- After-school book fair and book signing - choose from all of Andy's amazing titles and pay by cash or card on the day.
- Pre-order your signed copies online today to beat the queues!
- Free delivery via school on our event date - pupil and school details captured during website checkout.
- Andy's books have won lots of awards and are engaging and giggly... perfect to encourage children to read for pleasure!

Turn over to browse Andy's amazing titles

[www.popupbookshop.co.uk/andy-seed](http://www.popupbookshop.co.uk/andy-seed)



Scan to visit Andy's website page and pre-order your signed books!



**World Book Week 2026:** w/c 2<sup>nd</sup> March. See letter for timetable

## Year R

**Vision Screening:** Monday 23<sup>rd</sup> February

**Height & Weight Checks** Wed 15<sup>th</sup> April

## Year 2

**Marwell Zoo Trip:** Friday 24<sup>th</sup> April

## Year 4

**Paultons Park Trip:** Monday 9<sup>th</sup> March

## Year 5

**Southampton Art Gallery Trip:** Tuesday 24<sup>th</sup> March



**INSET Day:** Friday 27<sup>th</sup> March

**Easter Holidays:** Monday 30<sup>th</sup> March – Friday 10<sup>th</sup> April

## Mobile Phones

Please may we remind everyone that children should not be bringing mobile phones to school unless they are in Year 5 or Year 6 and have permission to walk to/from school without an adult and require a phone for safety reasons. Any children bringing phones for this reason must turn it off and hand it in to their teacher/the office for safe keeping in the school office during the school day.

-----

## Change of contact details

To streamline our communication channels and enhance efficiency across Reach South Academy Trust we are implementing a new email system for Hill View. Starting Monday 16th February 2026, all email addresses associated with Hill View Primary Academy will be standardised.

The dedicated email address to serve as the primary point of contact for all enquiries, administrative matters, and urgent communication. [reception@hillviewacademy.org](mailto:reception@hillviewacademy.org)

Thank you for your continued support in fostering a positive and collaborative environment at Hill View Primary Academy.

-----

## Ellis Edwards Rugby Festival (Years 3 & 4)



What a smashing day we had yesterday! Ducking, diving and weaving were the joys of the day. Hill View Rugby Squad did us proud at the Year 3 and 4 Ellis Edward Rugby Festival. Smiles, sportsmanship and style were exuded by all who attended. Tremendous acceleration saw the opposition stunned. Focussed tagging saw the attacks thwarted and focus on the game saw our teamwork soar. Proud staff and supportive family members were there to give each player the boost they needed- a great community to be part of!

A special mention and thanks must go to Super Coaches: Eddy (Andrew) Edwards and Ollie Rogers (and of course their side kicks, Will and Joe). These wonderful RFU coaches have supported our pupils from the very first session and into the tournament itself, giving up their mornings before work to see our pupils shine.

Now we await the Year 5 and 6 tournament at the end of April. Let's chase down those ASCENT Values!



**NHS**  
Hampshire Child and Adolescent Mental Health Services

New Strategy Based Films for parents/carers and Professionals New for 2026

<b>What is Emotionally Based School Avoidance</b> 	<b>Risk factors for Emotionally Based School Avoidance</b> 	<b>Tips for Emotionally Based School Avoidance</b> 
<b>Thriving with ADHD in school</b> 	<b>ADHD and sleep</b> 	<b>Reframing ADHD</b> 
<b>Girls and ADHD</b> 	<b>ADHD - order out of chaos</b> 	<b>Growing older and changing ADHD symptoms</b> 
<b>The importance of sleep</b> 	<b>Tips to support sleep optimisation</b> 	

To watch the videos, scan these QR codes

**NHS**  
Dorset HealthCare University  
NHS Foundation Trust

**PARENT/CARER WEBINAR**  
**HELPING YOUR CHILD MANAGE BIG EMOTIONS**

Is your child finding big feelings hard to manage? Are they becoming upset, angry or worried, or finding it hard to calm down after things go wrong? The MHST might be able to help. This webinar is suitable for parent/carers of children up to 12.

**Tuesday 24th Feb**  
**5pm-6pm**  
**Online event**

In this 1 hour live session we will:

- Explore emotional regulation
- Understand triggers and early warning signs
- Share ways to support your child to calm and cope
- Offer practical strategies you can try at home

For more information and to sign up: <https://bit.ly/4rKSOby>

**Online FREE talk by Jane Keyworth**  
**Anxiety Based School Avoidance**  
**March 26th 7-8pm**

Book online  
[www.facefamilyadvice.co.uk](http://www.facefamilyadvice.co.uk)  
go to PARENTS - Live Talks page

All 16 parent talks **FREE** with our School Membership

**british certified trainer**

# NSPCC Number Day

The NSPCC Number Day is a nationwide initiative where schools and nurseries across the UK take part in a mega maths fundraising day. The pupils from EYFS to Year 6 enjoyed a fantastic time taking part in this year's Number Day, and staff enjoyed seeing everyone dress up in their numbered clothing. There were some very creative ideas and the maths team and school staff extend a huge thank you to parents for their support. This year we managed to raise an incredible £281.35 for the NSPCC who work closely to support children nationally.

The children and teachers celebrated the day with different activities in classrooms, which reinforced our ethos that maths is for everyone. The children had a fantastic day grappling with mathematical resources, problem solving and working collaboratively.

Thank you for all of your support in making the day a great success!

## This week's WIZARDS



Y1 – Violet J-B  
Y1 – Lana J  
Y1 – Jemimah C  
Y6 – Jess D



**SUCCESS IS NOT FINAL, FAILURE IS NOT FATAL, IT IS THE COURAGE TO CONTINUE THAT COUNTS.**

WINSTON CHURCHILL

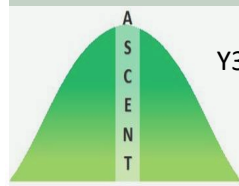
[www.theyarethefuture.co.uk](http://www.theyarethefuture.co.uk)

## Community Food Support



Please click on the [Food Map](#) for local community food support such as food banks, community fridges and social supermarkets

## Spring 1 ASCENT Awards



Y3 – Poppy H-R  
Y4 – Evie H

Aspire  
Success  
Community  
Excellence  
Nurture  
Trust

## Attendance Cup Winners

W/C 9<sup>th</sup> February

YR - ROSEN 97.4%

KS1 – KUSAMA 98.5%

**Lower KS2 – MURRAY 99.5.0%**

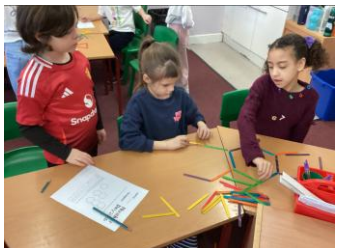
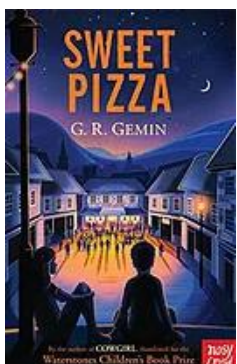
Upper KS2 – ARMATRADING 98.4%



## Recommended Read Book of the week (Y4)

### Sweet Pizza – G.R.Gemin

When Joe tasted a mouthful he was amazed how delicious it was - a dense taste, better than any pasta he'd eaten before. Food was suddenly different - he felt as if his taste buds were doing the cha-cha-cha on Strictly. Joe loves his Italian heritage: the language, the opera, the lasagne! But it's hard to celebrate his Italian roots in Bryn Mawr, South Wales, where his mam is sick of running the family's tatty cafe. Just like his great-grandfather who opened the cafe in 1929, Joe is an entrepreneur. He vows to save the family business, and to spice up the tired High Street with a little Italian flavour!





## FREE! activities for children and families during Half Term.

Check opening times for each library before visiting - [bcpcouncil.gov.uk/libraries](http://bcpcouncil.gov.uk/libraries)

Bournemouth Library	Chinese New Year crafts - make a hobby horse and colouring activities	Monday 16 <sup>th</sup> - Saturday 21 <sup>st</sup> February - Drop in
Broadstone Library	Chinese New Year horse craft and picture trail	Saturday 14 <sup>th</sup> - Wednesday 18 <sup>th</sup> February - Drop in
Broadstone Library	The Great Storytelling Challenge competition and dressing up costume swap	Drop in all week. Competition closes on Saturday 28 <sup>th</sup> February
Canford Heath Library	Chinese New Year craft	Monday 16 <sup>th</sup> February 2:30 - 4:00 - Drop in
Canford Heath Library	Valentines cards and story	Saturday 14 <sup>th</sup> February 10:00 - 12:00 (Story at 11am)
Canford Heath Library	BookTrust Storytime and craft	Saturday 21 <sup>st</sup> February 10:00 - 12:00 (Story at 11 am)
Castlepoint Library	Valentine cards and colouring	Saturday 14 <sup>th</sup> February - Drop in
Castlepoint Library	Lunar New Year treasure hunt, crafts and colouring	Monday 16 <sup>th</sup> - Saturday 21 <sup>st</sup> February - Drop in
Christchurch Library	100 years of Winnie the Pooh crafts and activities	Saturday 14 <sup>th</sup> - Saturday 21 <sup>st</sup> February. Drop in
Creekmoor Library	Chinese New Year horse craft	Saturday 14 <sup>th</sup> - Saturday 21 <sup>st</sup> February Drop in during opening hours
Ensbury Park Library	'The Weather' craft activity	Tuesday 17 <sup>th</sup> February 10:30 - 11:30
Kinson Library	Create your own parachute and button figure	Saturday 14 <sup>th</sup> - Saturday 21 <sup>st</sup> February - Drop in
Oakdale Library	Children's crafts - including Chinese New Year	Tuesday 17 <sup>th</sup> , Wednesday 18 <sup>th</sup> Friday 20 <sup>th</sup> February - Drop in
Poole Library	Paper kite making	Wednesday 18 <sup>th</sup> February 10:30 - 11:30 Booking essential - limited places
Rossmore Library	Fairy tale story creator and lollipop stick puppets	Saturday 14 <sup>th</sup> - Saturday 21 <sup>st</sup> February - Drop in
Rossmore Library	Individuality Swimming - water safety talk for families	Tuesday 17 <sup>th</sup> February 11am - Drop in
Rossmore Library	Library legends crafts and character hunt	Friday 20 <sup>th</sup> February 15:30 - 16:30 - Drop in
Springbourne Library	Children's crafts - puppets, masks and a collage for Chinese New Year	Monday 16 <sup>th</sup> February 14:00 - 16:30 - Drop in
Springbourne Library	Creative kids' crafts, and public health and community outreach	Tuesday 17 <sup>th</sup> February 14:00- 16:00 - Drop in
Southbourne and Pokesdown Library	Create your own clouds	Monday 16 <sup>th</sup> - Saturday 21 <sup>st</sup> February - Drop in
Tuckton Library	Chinese New Year horse craft	Monday 16 <sup>th</sup> February 10:30 - 11:30 Please book with Tuckton Library
Westbourne Library	Chinese New Year horse and dragon crafts	Saturday 14 <sup>th</sup> - Saturday 21 <sup>st</sup> February - Drop in
West Howe Library	Chinese New Year - make a horse mobile Children's Mental Health Week - decorate a hand Library Legends - design a book cover	Monday 16 <sup>th</sup> - Saturday 21 <sup>st</sup> February - Drop in during opening hours
Winton Library	Creative pebble painting (Winton Library Garden Volunteers)	Saturday 14 <sup>th</sup> February 10:30 - 12:30