



Hill View Primary School

Reach For The Stars

Newsletter No. 20 w/c 02/02/26

Safer Internet Day

Safer Internet Day 2026 will take place on the Tuesday 10th February, we will be celebrating and learning about 'Smart tech, safe choices – Exploring the safe and responsible use of AI' throughout the week during our computing lessons.

AI technology is increasingly part of all our lives, so this Safer Internet Day we are starting conversations about how to use it safely and responsibly. If you can continue to keep our small people safe online and use these top tips at home, we would really appreciate it.

Enjoy going online together and talk regularly about your family's online lives

The internet is amazing and can help us all to access information and entertainment. Spend time online with your child, when you can to understand how they are using technology and talk together about the good and the bad parts of being online.

Understand where AI technology is being used and the impact it can have

From summaries on search engines, to voice assistants and photo editing tools, AI powered features are being added to many of the apps and devices we use day-to-day. Look out for information and warnings notifying you where AI technology is in use or where content has been created using AI. Help your child to recognise these too.

Recognise what safe and responsible use of technology looks like

To use technology, including AI, safely and responsibly, it's important to reflect on the potential impact it can have on yourself and others. How does your use of technology make you feel? How can you use technology with kindness and respect for others? Does your use of technology benefit you or help you build skills?

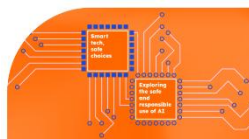
Stay informed with free resources

Young people have told us about the incredible ways they're using AI, but also about their worries for what it means for the future. Issues such as the environmental impact of AI, what it means for job prospects, and the threat of deepfakes can seem scary but remember, you don't need to have all the answers.

Stay informed using these free resources:

[Safer Internet Day Resources](#)

Most importantly ensure that they know where to go for help if something goes wrong



Thank you again for your continued support with encouraging kind and safe engagement with technology amongst our students, sharing these points and holding short discussions around the dinner table will help build positive relationships with technology for our pupils.

Coming Up w/c 9th February

(Children's Mental Health Week)

Monday 9th – Y5 Armatrading Class. Bread baking

Monday 9th – Year 6 Parent Outcome 2.30pm

Tuesday 10th – Y5 Cassidy Class. Bread baking

Tuesday 10th – Year 2 Parent Outcome 3.30pm
(wait on main playground to be directed into classrooms)

Wednesday 11th – Y5 Lloyd Webber. Bread baking

Wednesday 11th – Year 4 Parent Outcome 2.40pm
(please enter via Y3/Y4 side gate)

Wednesday 11th – Year 1 Parent Outcome 9.05am
(please enter via Y3/Y4 side gate)

Thursday 12th – Whole School. 'Come as yourself day' Non-uniform ([See Childrens MH Week letter](#))

Thursday 12th – Year 4. Play-in-a-day

Thursday 12th – Y3 & Y4 Tag Rugby Festival

Thursday 12th – Year 3 Parent Outcome 2.40pm
(please enter via Y3/Y4 side gate)

Friday 13th – INSET DAY (School closed to pupils)

Reminders

All years – Author Andy Seed visit. £1.25 payment

Year 2 Marwell Zoo Trip £19 payment due 3rd April

Year 4 – Residential Trip instalment payments due

Year 5 – Southampton Art Gallery Trip £14 payment due Monday 3rd March

Year 6 – Residential Trip instalment payments



Hot School Meals (Forerunner)

Deadline: midnight on Mondays for the following week.

PTFA Update



PTFA Meeting

Our next PTFA meeting will be **Monday 9th February at 7:30pm at the Crown Pub** on Broadhurst Avenue. You are welcome to attend and find out what else is going on!

School Discos

Thank you to everyone who bought tickets and volunteered time for the school discos, the children (by general report) had a great time!

SPRINGO (Bingo)

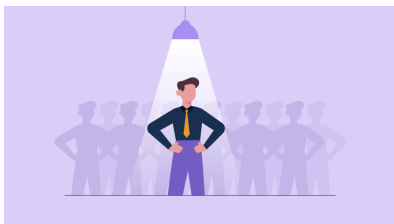


Are you a whizz with your stamper? Would you like a night shouting **HOUSE!** While enjoying a bar and food with your friends and family? Then please save the date for our spring Bingo session: **Friday 15th May 7-10pm**

We have the great delight to introduce the PTFA's very own Bingo Caller Matt, who has come out of retirement to introduce this special event.

If you or your company would like to sponsor any prizes for the evening for this unique marketing opportunity, please get in touch via classlist or email. All donations will be gratefully received!

PTFA Team Spotlight



Hi, I'm **Alistair** and this is my fourth year being part of the PTFA. I'm the treasurer, so I help with the banking and keeping track of the money.

I don't always have loads of spare time around work and home life, especially with my two boys at Hill View (Year 3 and Year 1), but I always make sure I turn up to support events and help out where I can. I like to bring plenty of cheer and energy to our meetings, to keep everyone going and having fun.

My boys are really proud that I'm in the PTFA - they seem to think it's a special club where I find out all the secrets about what's going on at school, that I know everyone, and that Mr Kellaway is my best friend! I went to Hill View myself as a child, so it feels really special to be able to give something back. It's so rewarding seeing the children enjoy the events and knowing the fundraising helps the school.

Hill View PTFA

Uniform Preloved & NEW!

We have a wide range of stock available of new Uniform to purchase from us. Please see our updated price list below or by [clicking here](#) to view on the school website.

Hill View Uniform Price List
Available to purchase from the P.T.F.A.

We can now send you a link for payment with easy collection from the school office

Sweatshirt	PE T-Shirt	Cardigan	Ties	Book Bag	Polar Fleece
£13.00	£8.00	£15.00	£5.00	£10.00	£17.00

Item	Cardigan	Fleece	Sweatshirt	PE T-Shirt
Sizes	22" (3-4yrs), 24" (4-5yrs), 26" (5-6yrs), 28" (7-8yrs), 30" (9-10yrs), 32" (11-12yrs), 34" (13yrs), 36" (5 Adult)	3-4yrs, 5-6yrs, 7-8yrs, 9-10yrs, 11-12yrs, 13yrs	24" (4-5yrs), 26" (5-6yrs), 28" (7-8yrs), 30" (9-10yrs), 32" (11-12yrs), 34" (13yrs), 36" (5 Adult)	3-4yrs, 5-6yrs, 7-8yrs, 9-10yrs, 11-13yrs, S, M & L

To place orders, please contact us by Email: hillview.ptfa@hotmail.co.uk or our Facebook page: Hill View Primary School P.T.F.A. Cash and Card payment accepted

All profits made from sales go back into the school to benefit all pupils.

We continue to have stock in the main office for pre-loved items. An honesty box is at the reception desk. We only accept cash for pre-loved.

'Pre-Loved' Uniform Price List 2024
Available to purchase from the rail in the school office

Items	Price (Cash)
Book Bags	
PE T-Shirts	
Pinafores	
Shorts (all inc PE)	£1 EACH
Skirts	
Shoes (& Plimsols)	
Summer Dresses	
Ties	
Trousers	
Cardigans / Sweatshirts	£4 EACH
Coats / Fleece	
White Shirts	2 for 50p

Cash Payment: There is an honesty box in the school office

Donations: We are always pleased to receive uniform donations. These can be left under the clothes rail

Thank you for your support

All profits made from sales go back into the school to benefit all pupils.

If you have any clean, good quality items for donating, please leave in a bag under the existing clothes rail. All donations are gratefully received. **Thank you.**

Classlist

If you haven't already done so, please [sign up to Class List](#). This app helps keep track of events and enables you to book tickets and pay for PTFA events.

How to reach us:

Email: [Hillview.ptfa@hotmail.co.uk](mailto:hillview.ptfa@hotmail.co.uk)

Facebook: www.facebook.com/hillview.primaryptfa/

Classlist: <https://classlist.page.link/6d9FBeD11FcyAUrCZ>

Children's Mental Health Week



Children's Mental Health Week will take place next week, from **Monday 9th February to Friday 13th February 2026**, with the theme **"This is my place"**, focusing on helping children feel safe, valued, and that they belong.

Throughout the week, children will take part in activities during the school day linked to the theme **"This is my place."**

On **Thursday 12th February**, we will be having a **"COME AS YOURSELF DAY."** Children are invited to come to school wearing an outfit that makes them feel comfortable, confident, and truly themselves. This could be cosy clothes, cultural dress, favourite colours, or something meaningful to them. **Please ensure that children wear appropriate footwear suitable for a normal school day, as they will still be taking part in their usual activities.**

On **Friday 13th February**, there will be an INSET day where the focus is **"This is My Family & Community."** Below are some optional home activities which you can complete with your child/children:

- Talking together about what makes your family special
- Drawing people or places that help your child feel they belong
- Completing a small act of kindness at home

Thank you for your continued support in helping us promote positive mental health and a strong sense of belonging.

The SMSC Team

Thrive with
ADHD
Support Group

Parent School Support Group



with
Chris Benson

A monthly space for parents and carers to ask questions, gain perspective and feel supported in navigating ADHD.

Led by Chris Benson — an ADHD adult, parent, and school leader from 2007–2025 — these sessions offer insight, encouragement and practical thinking without formal training content.

A chance to reflect, share challenges and access lived experience and professional understanding in a supportive environment.

We receive no government funds. Fundraising is extremely difficult because of the economic climate and because of the discrimination and stigma that means many can't be out and ask for fundraising sponsorship. **That means any donation you give is extremely valued and is the only way we can do the work we do.**

We ask for a donation regardless of size. Even 1p. With a suggested donation of £5.

If you are not in a position to donate then we still want to welcome you and have you attend. Simply put in the suggested donation and place the tickets in your basket, [generate your coupon here](#), and use the coupon to 100% discount the basket.

Spring Term Dates for your diary

Whole school

Children's Mental Health Week – w/c 9th February. **Non-uniform Day:** Thursday 12th February

World Book Week 2026: w/c 2nd March. See letter for timetable

Year R

Vision Screening: Monday 23rd February

Height & Weight Checks Wed 15th April

Year 2

Marwell Zoo Trip: Friday 24th April

Year 4

Play-in-a-day (in school): Thursday 12th February

Paultons Park Trip: Monday 9th March

Year 5

Southampton Art Gallery Trip: Tuesday 24th March



INSET Day:
Friday 13th February

Half Term holiday:
Monday 16th February – Friday 20th February

INSET Day:
Friday 27th March

Easter Holidays:
Monday 30th March – Friday 10th April

Jewellery & School attire

Please can we remind parents and carers of our school uniform policy.

Uniform and shoes

Full uniform must be adhered to. Trainers should not be worn with normal school uniform. These are only for PE days when children come to school in their PE kits. Ties must be worn with shirts (no polo shirts).



Jewellery

We ask children not to wear jewellery. Small gold colour stud earrings only are permitted and will need to be removed on PE days, or carefully covered with a sticking plaster (supplied by yourselves) to minimize dangers in PE or games.

Hair

Children's hair should be neat in appearance and tidy. We ask that children's hair is an appropriate style for school and must not reflect any extreme fashion and should not be dyed. Long hair should be tied back. We request that elaborate hair ties or hair bands are not used.

Nail Varnish & Make-up

We ask children not to wear nail varnish and/or any make-up to school.

Coats

Please ensure children bring an appropriate coat for the forecast weather.

Prevent Lost Property

Please ensure that all items are clearly labelled with your child's full name. This includes, jumpers, cardigans, coats, hats, gloves, and water bottles.

Thank you for your cooperation

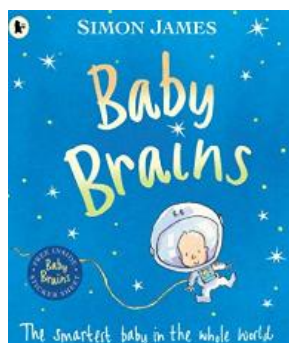


Recommended Read Book of the week (Y1)

Baby Brains

By Simon James

Meet the extraordinary Baby Brains He reads the paper, mends the car and works as a doctor at the hospital. He's so clever that some scientists ask him to go on their next space mission. And that's when Baby Brains shows that in one way at least he's like every other baby in the world: he wants his mummy!



This week's WIZARDS



YR – Sienna YW
YR – Harper C
Y1 – Freya W
Y1 – Ariana
Y1 – Noah C
Y2 – Evan W
Y2 – Poppy M
Y2 – Harry F



No Key Stage 2 wizards this week



Community Food Support



Please click on the [Food Map](#) for local community food support such as food banks, community fridges and social supermarkets



Attendance Cup Winners

W/C 2nd February

YR - CARLE 96.4%

KS1 – NIGHTINGALE 99.3%

Lower KS2 – MURRAY 97.2.0%

Upper KS2 – LLOYD WEBBER 99.3%



RAILWAY 200 INSPIRATION TRAIN



16th-18th February at Corfe Castle Station

Step aboard a travelling exhibition celebrating **200 years of Britain's railways.**

Exhibition access included with your rain ticket (timed entry required).

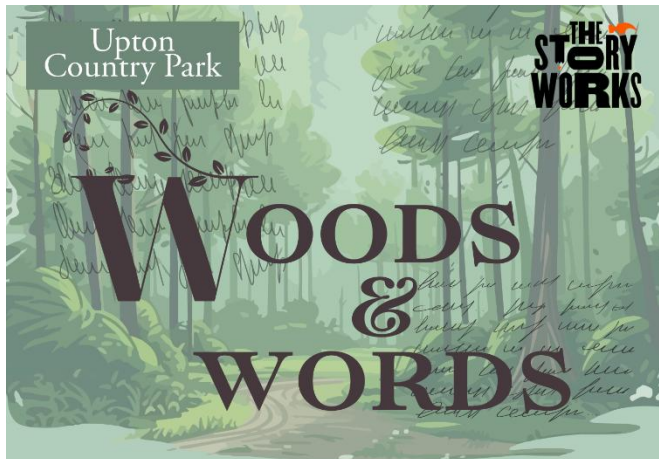


Perfect for families, history lovers and railway fans

Book now at: swanagerailway.co.uk



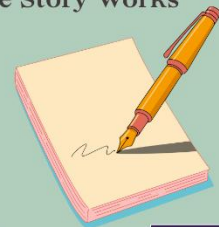
ADVERTS – Hill View Primary places all adverts in good faith. It should be noted however that the quality of products or services being offered have not been checked by the school nor are the school aware whether necessary DBS checks have been carried out. Hill View Primary is neither encouraging nor discouraging any advert placed.



Feb Half Term Fun & Creativity!

A week of Poetry and Creative Workshops for all ages with Upton Country Park's Writer in Residence from the Story Works

- Writing workshops for all ages
- Family Woodland Trail
- Free poems whilst you wait
- The Poet-Tree
- Writers open mic night!



Monday 16 - Friday 20 February
visit uptoncountrypark.com
for more information



Owned and operated by

COMMUNITY WEEKEND AT SWANAGE RAILWAY



14th - 15th February

Meet the volunteers, explore the railway, and enjoy family-friendly activities.

Dorset residents receive 50% off tickets.



Book now at: swanagerailway.co.uk

Upton Country Park

Winter Wildlife Adventure Day!

How many species will you see?

Join the experts for pond dipping, guided bird walks, crafts and lots more!

Upton House
Monday 16 February 2026
10am-4pm
FREE

Discover Upton Country Park's wildlife with...



More info at uptoncountrypark.com/events/



Owned and operated by